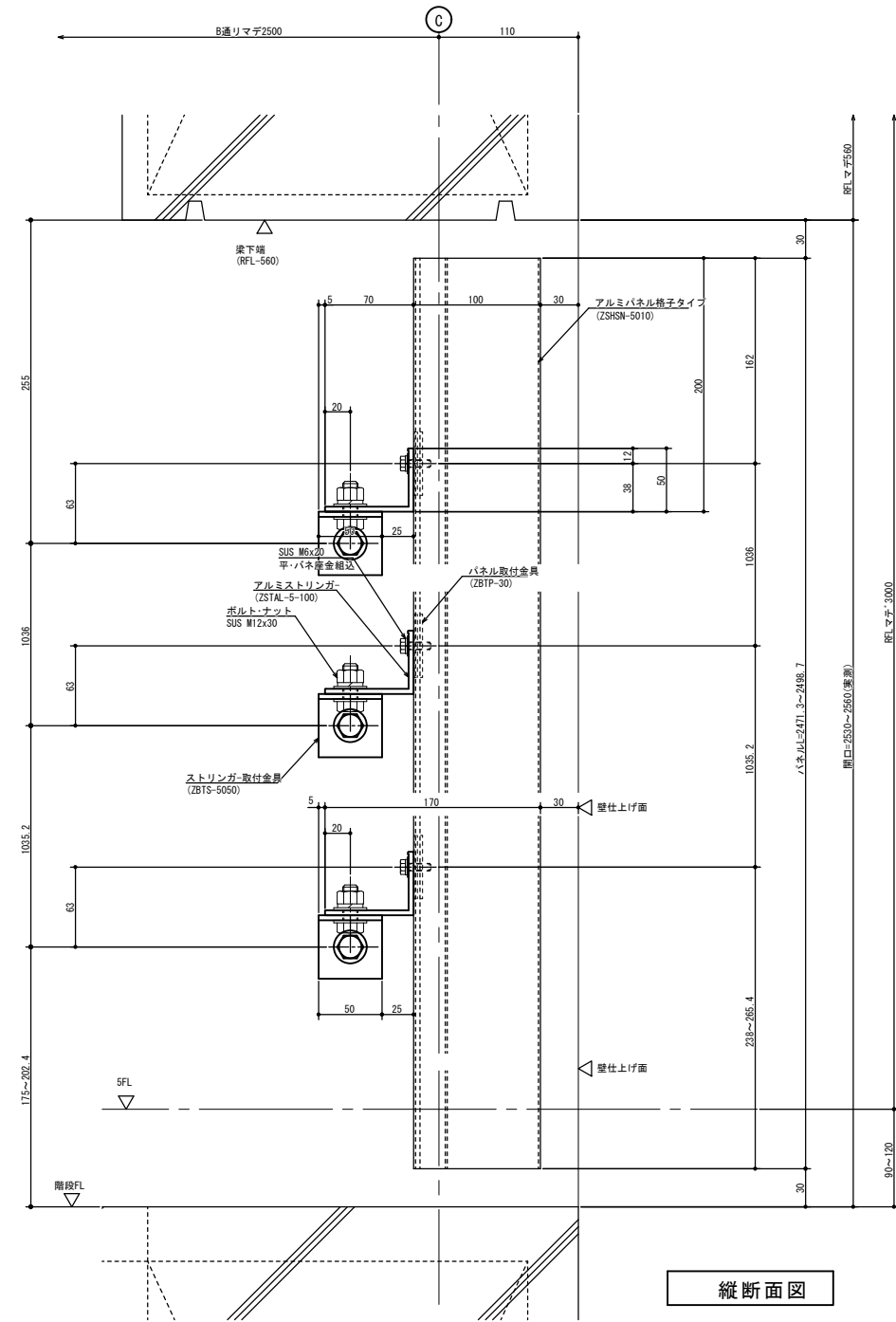
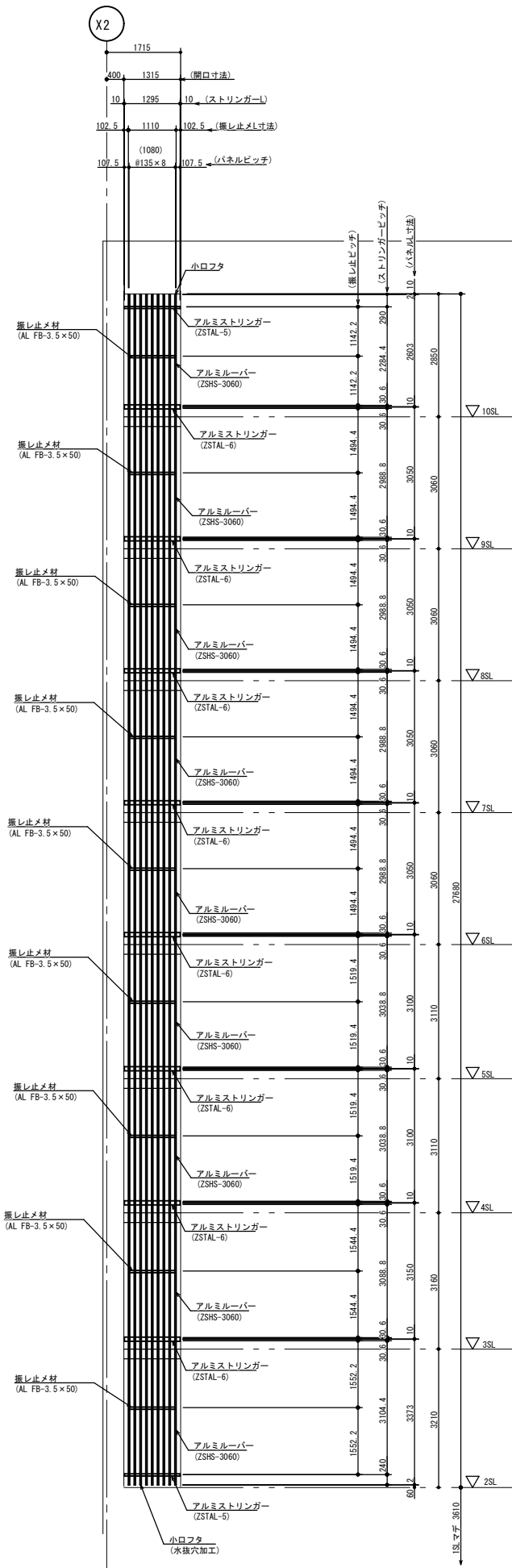


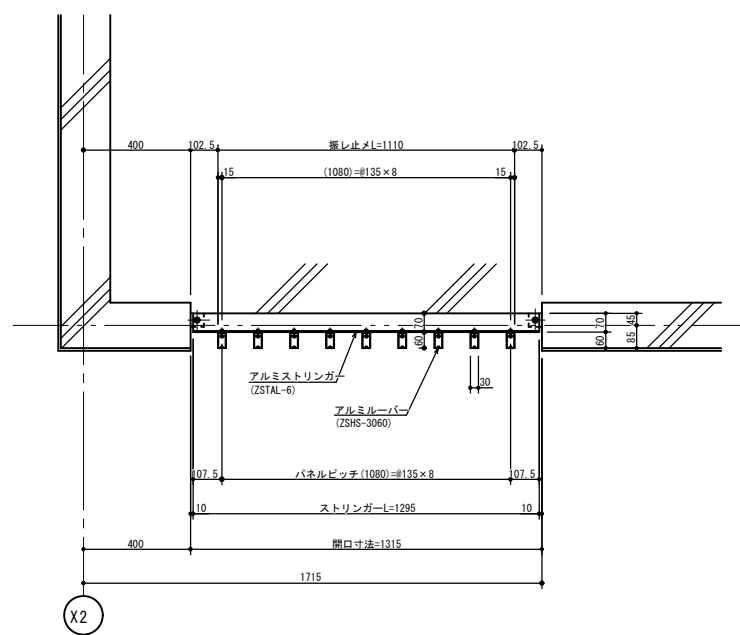
横断面図



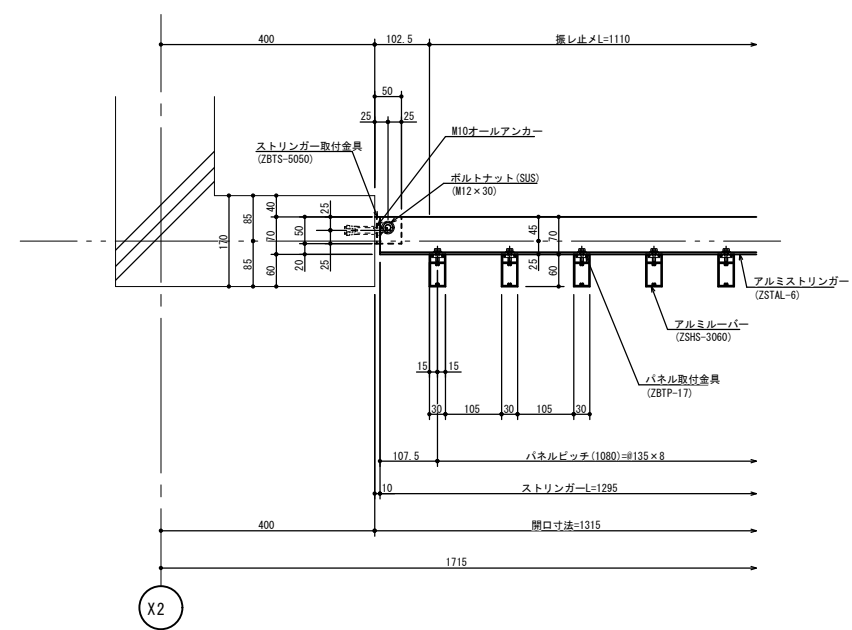
縦断面図



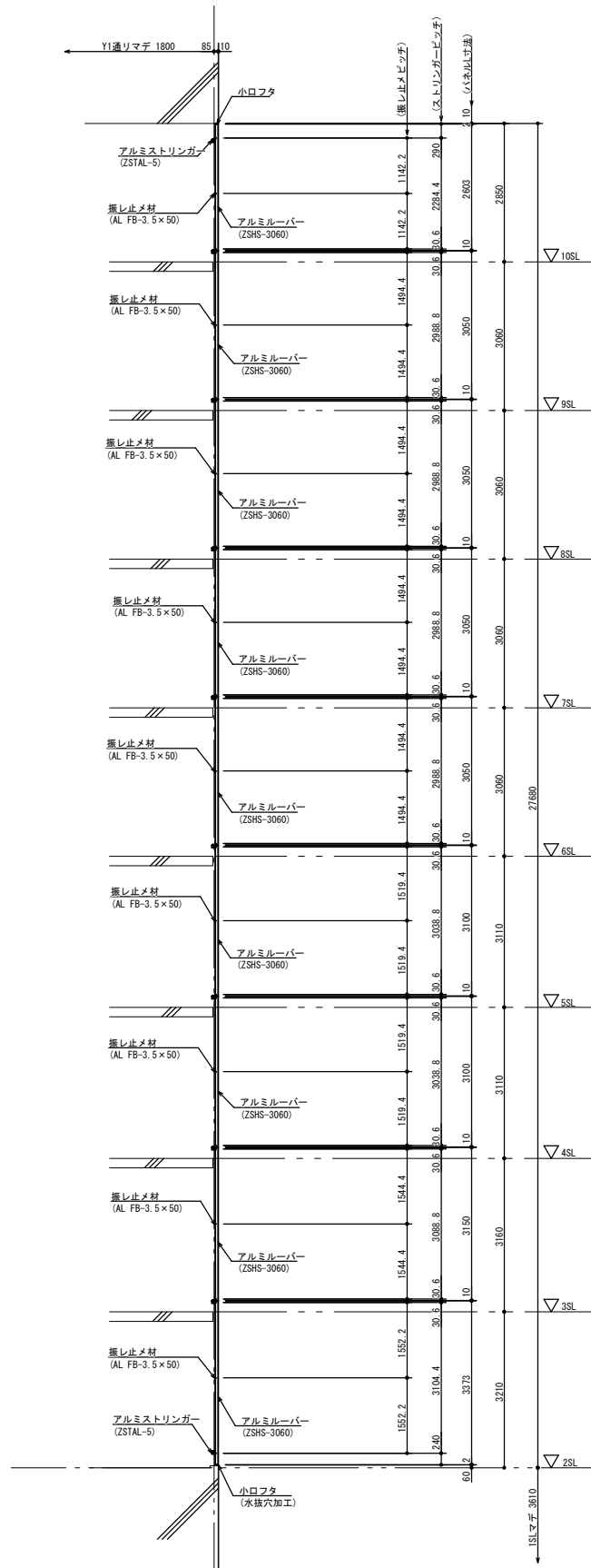
アルミルーバー 立面図

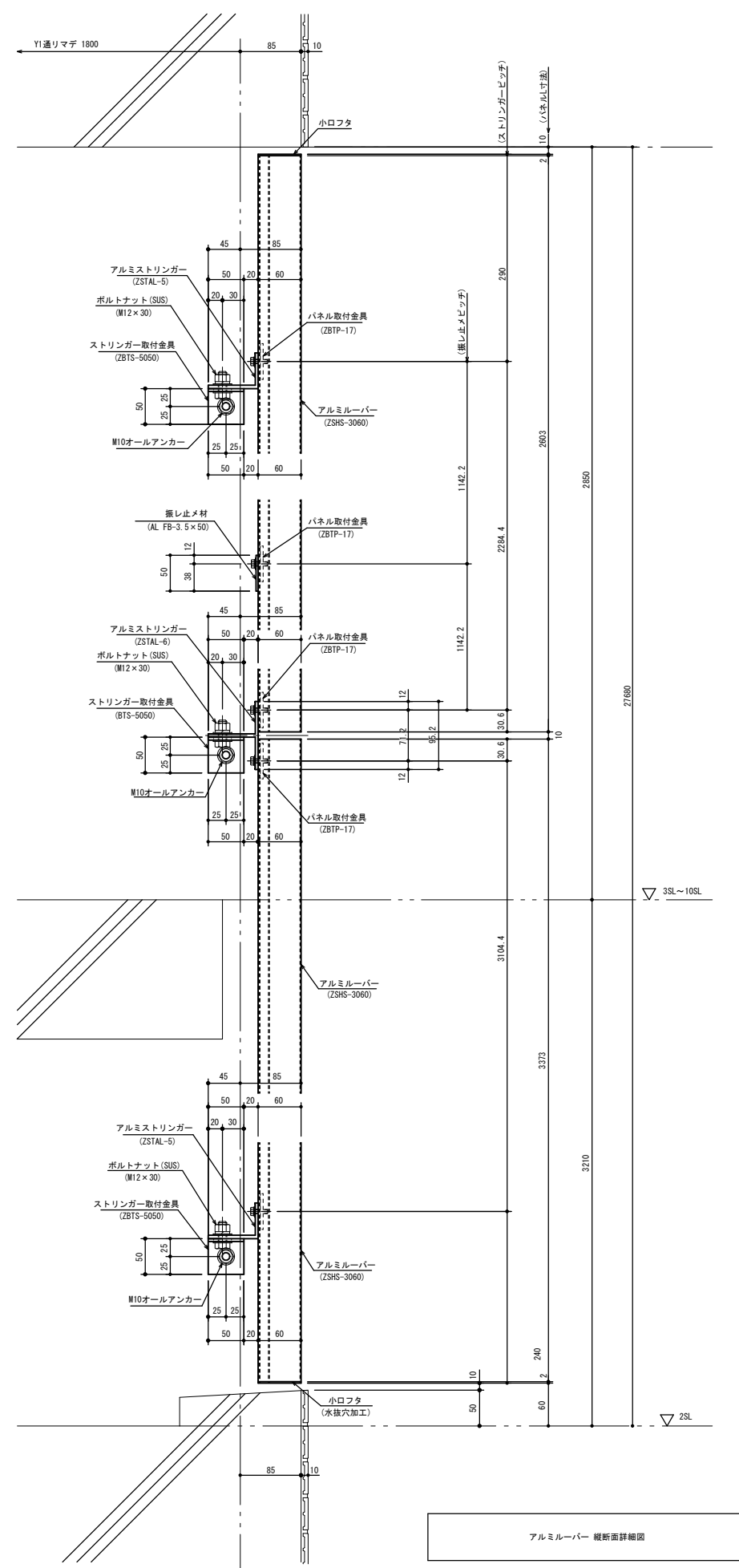


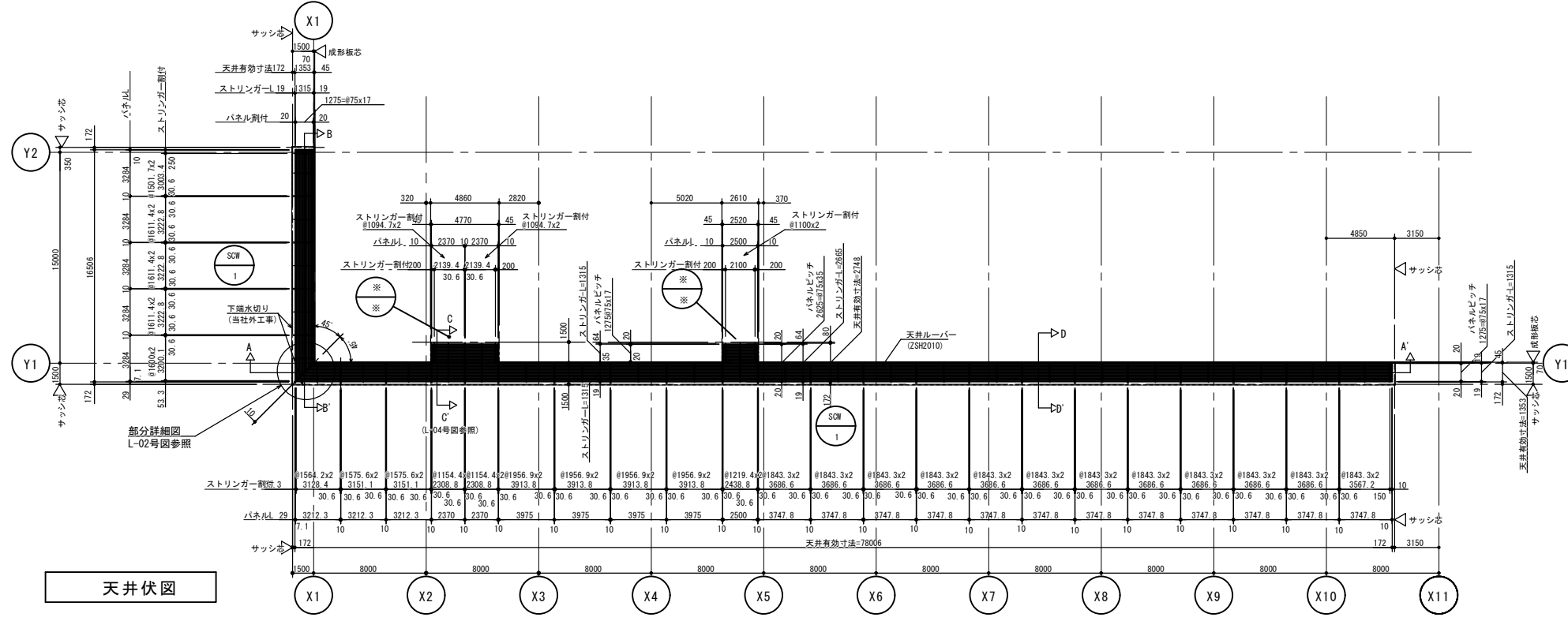
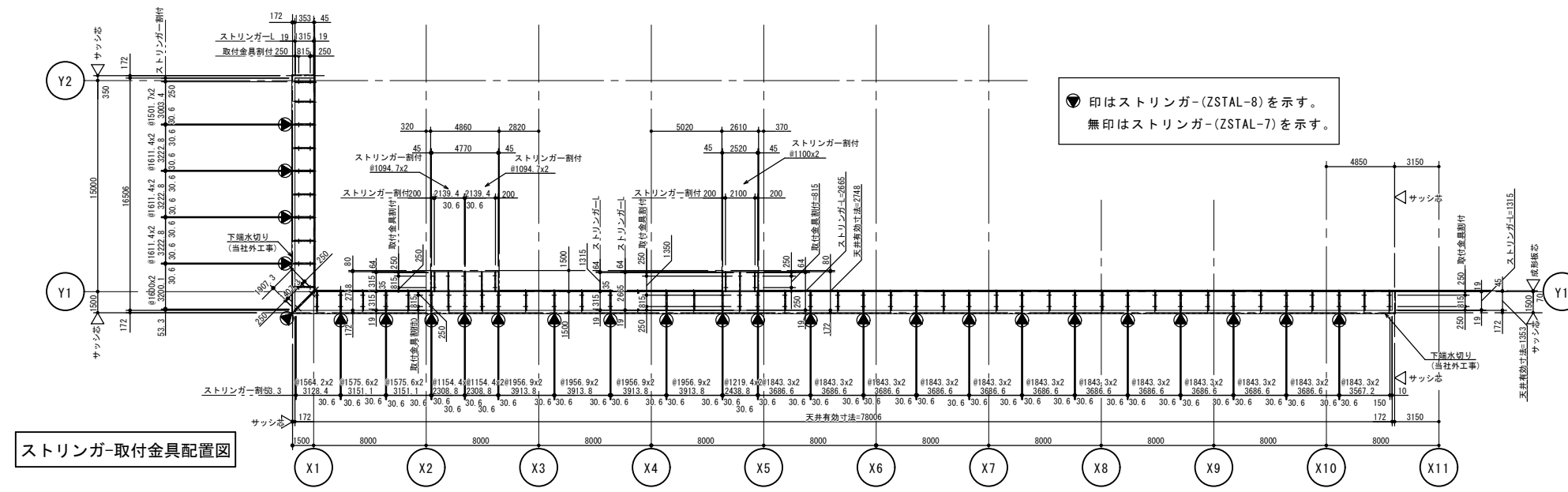
アルミルーバー 平面図

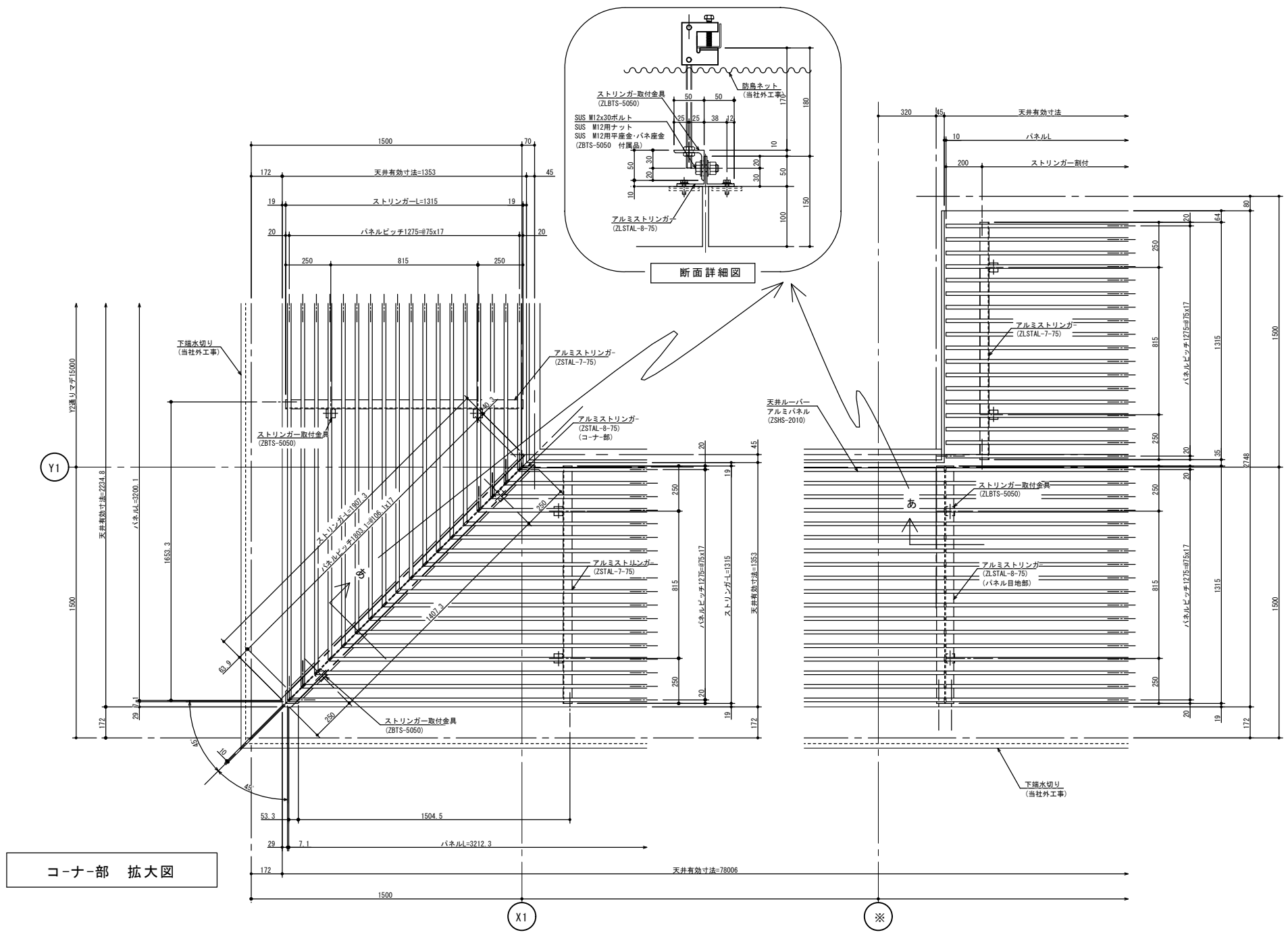


アルミルーバー 平面詳細図









コーナー部 拡大図

断面詳細図

Y1

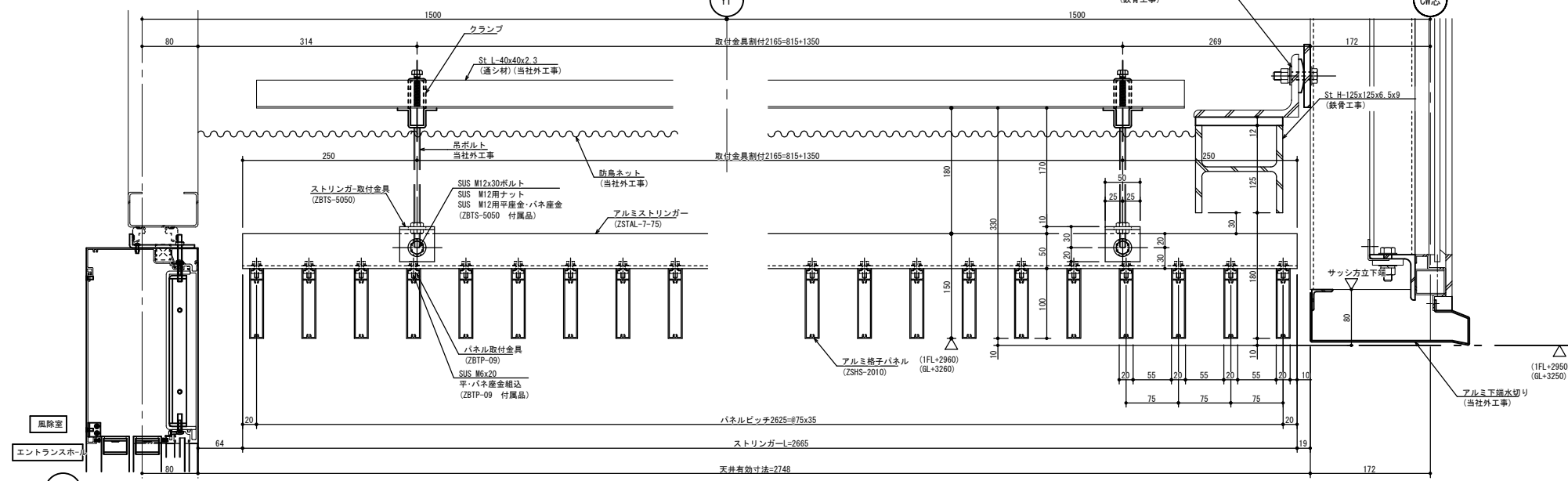
X1

※

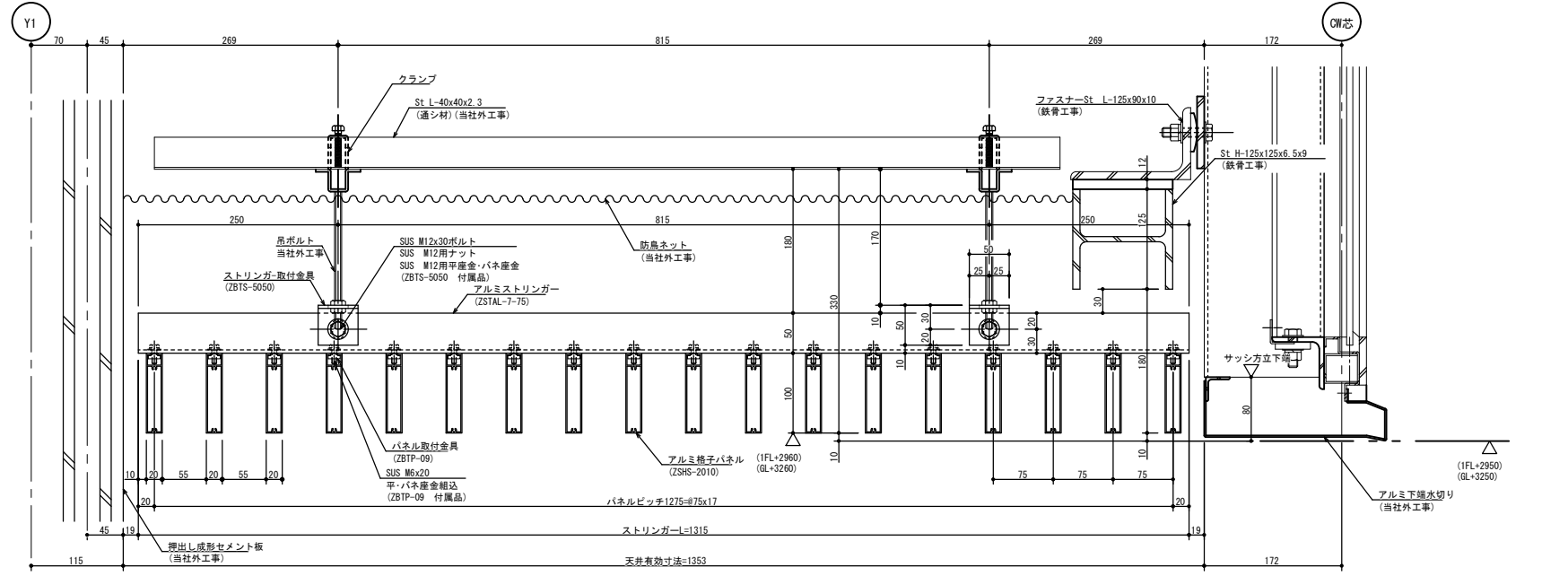


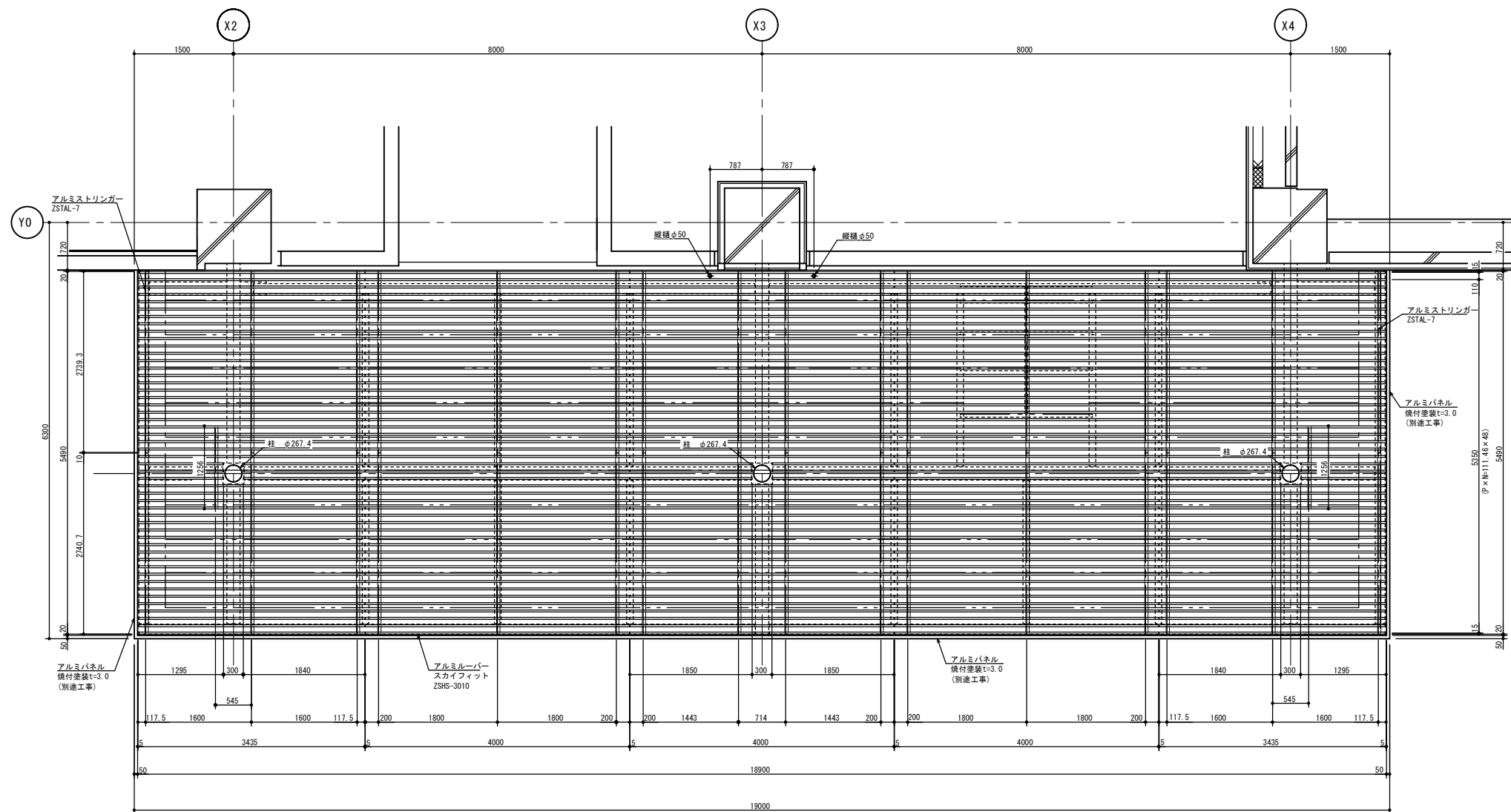


C~C' 断面

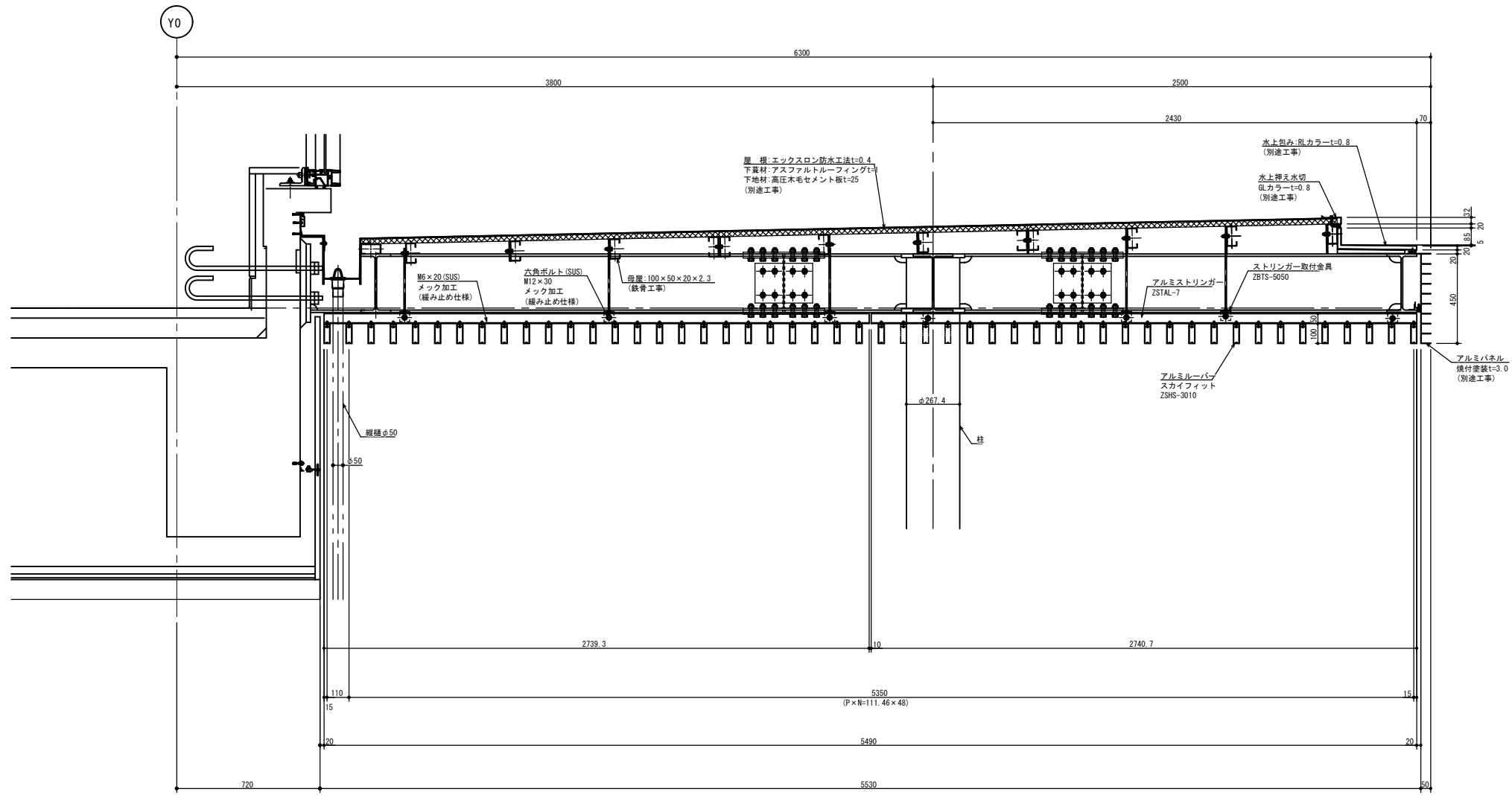


D~D' 断面



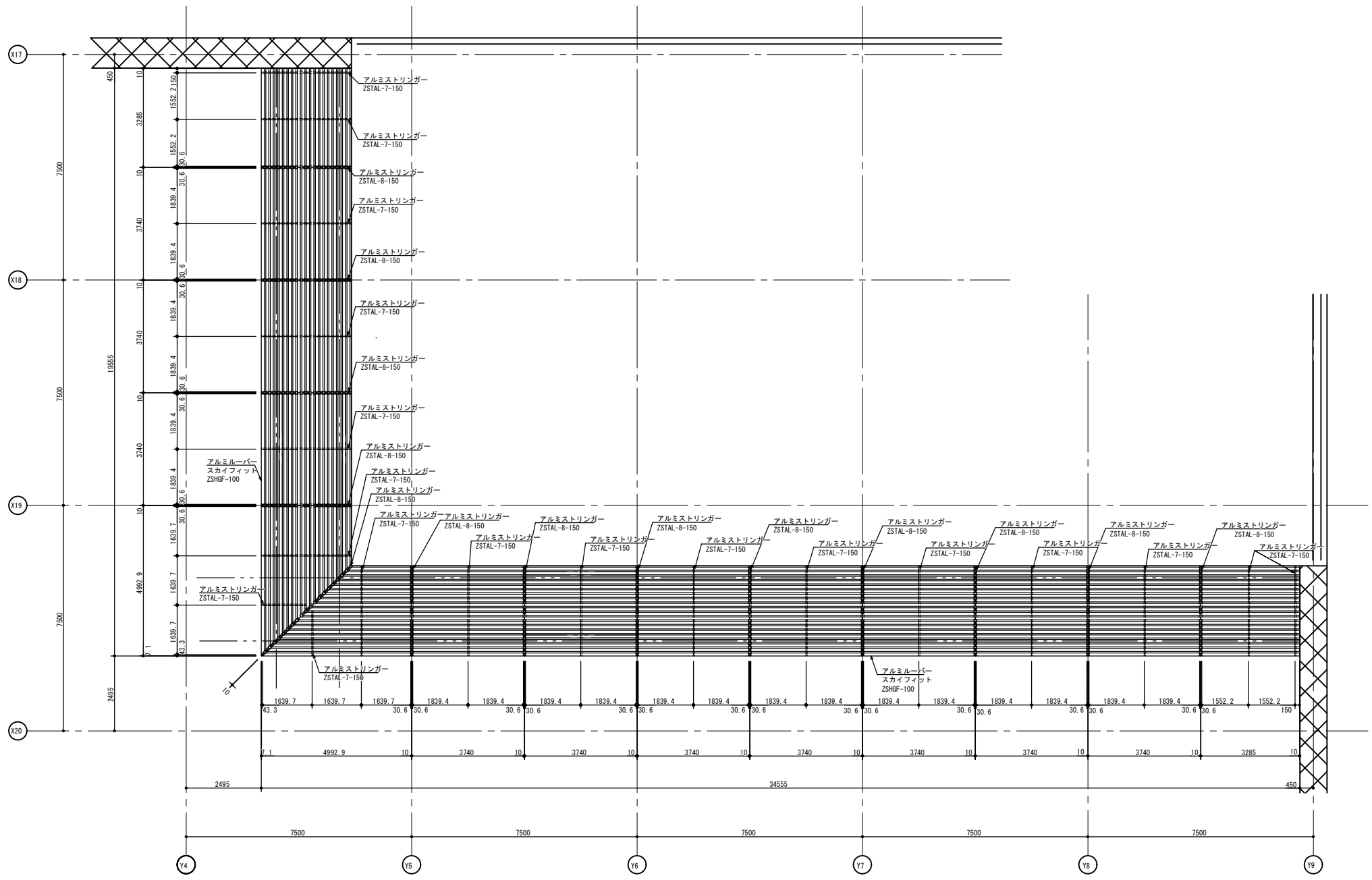


天井伏図

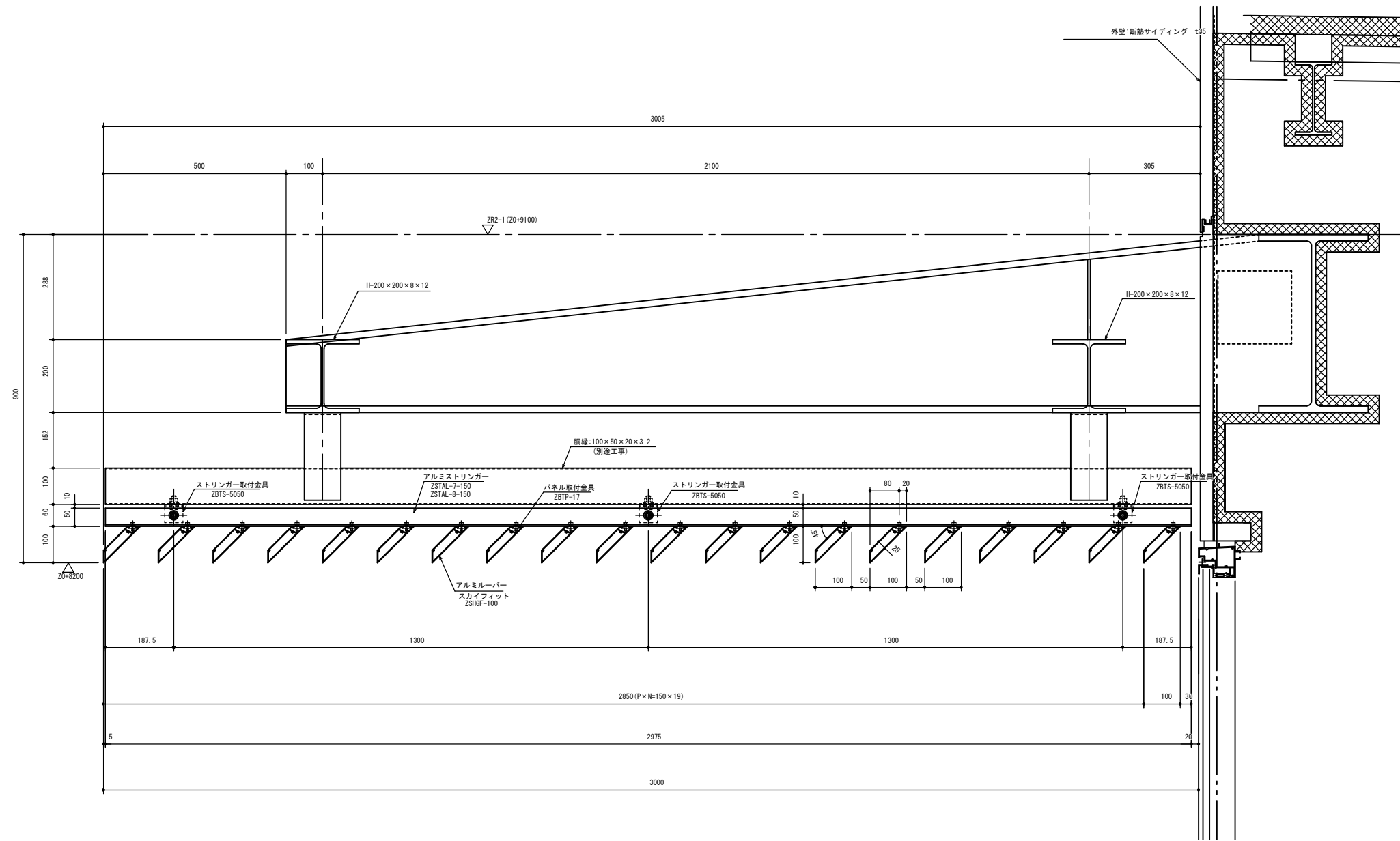




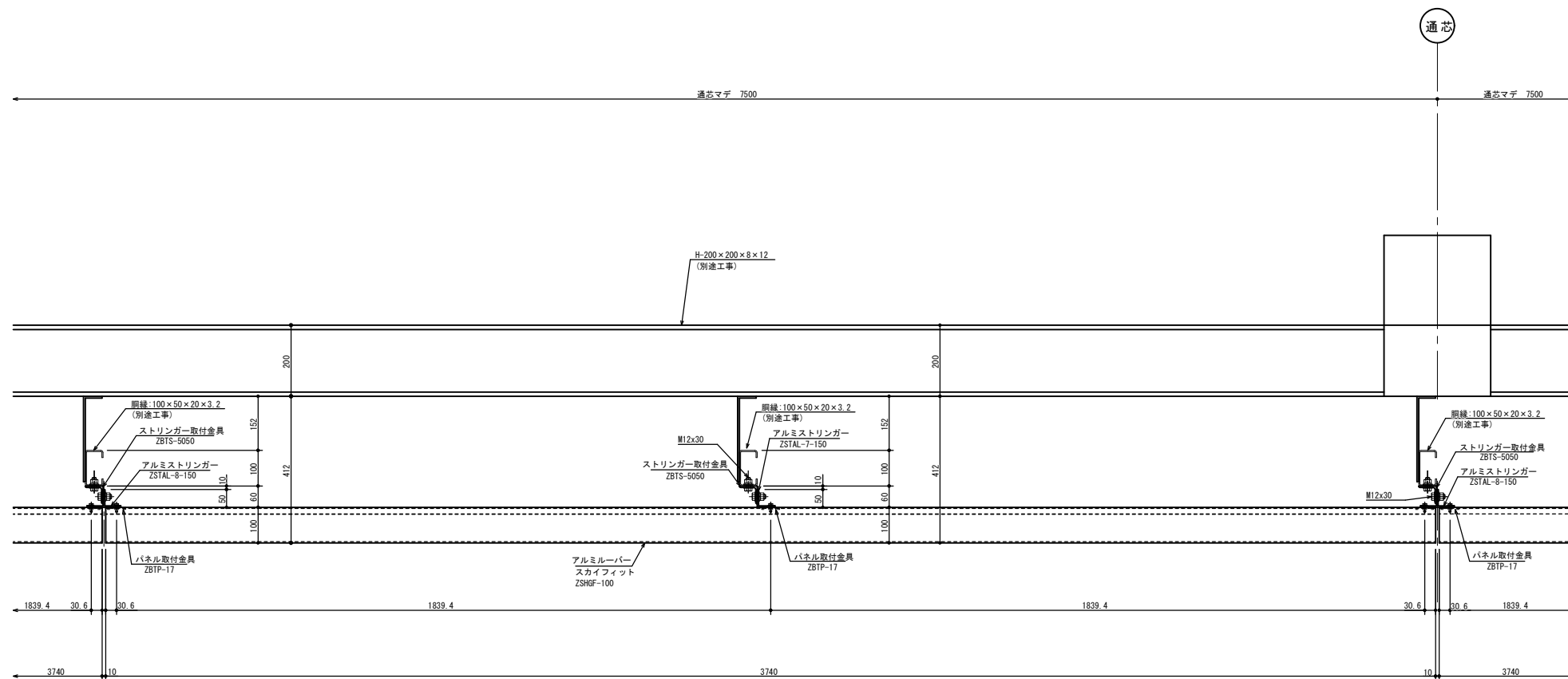


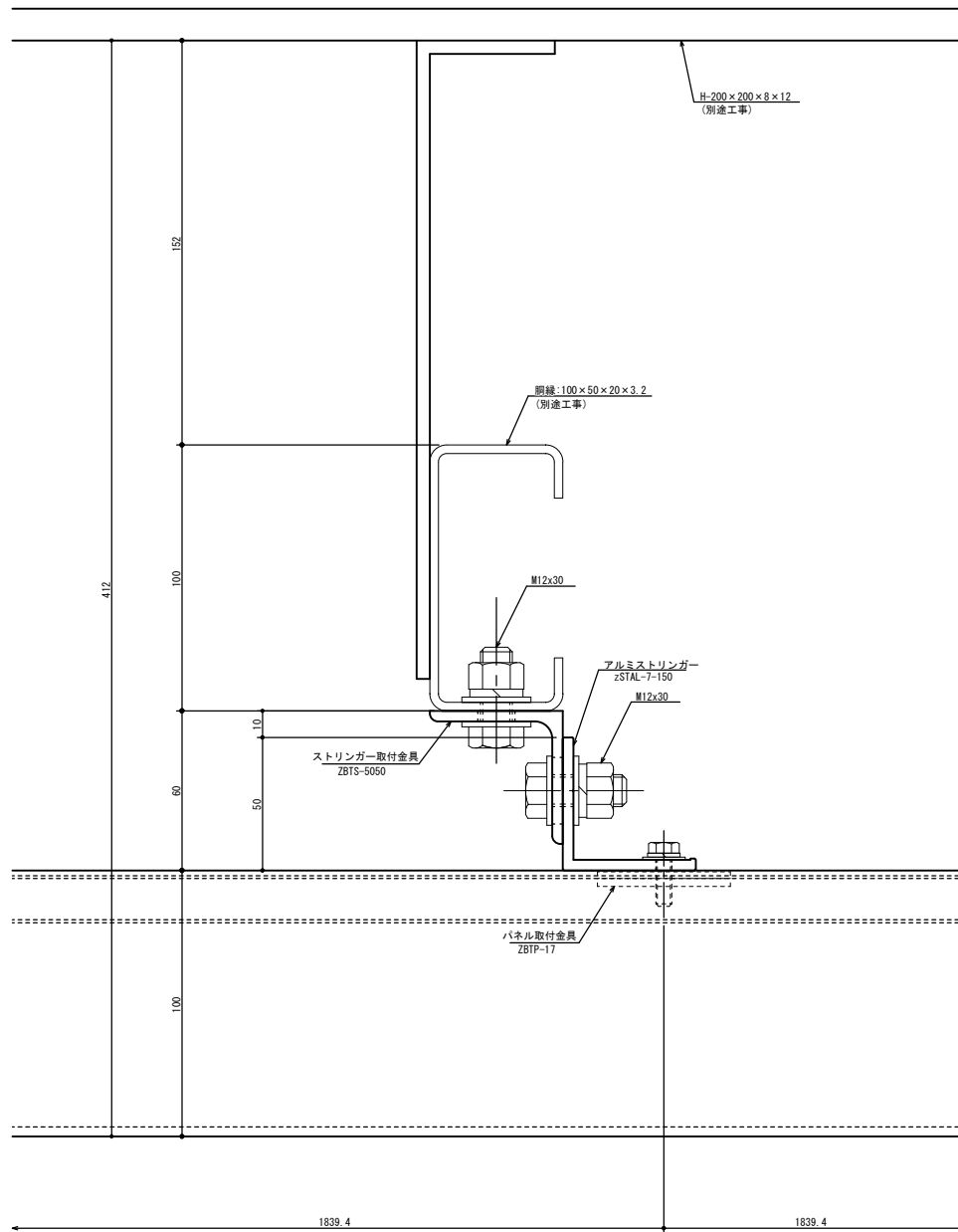


ルーバー底 天井伏図

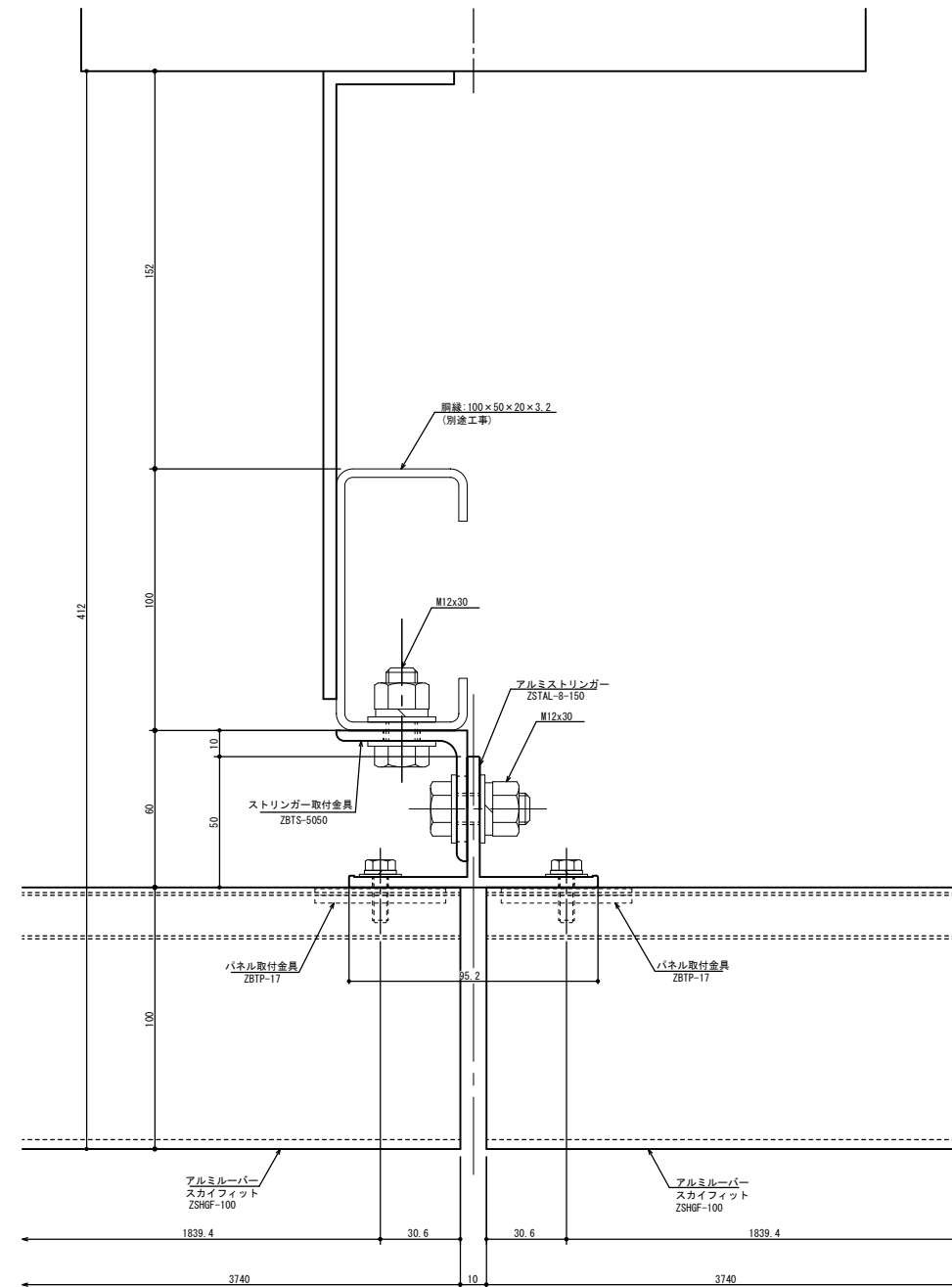








ストリンガー部 断面図



ジョイント部 断面図

